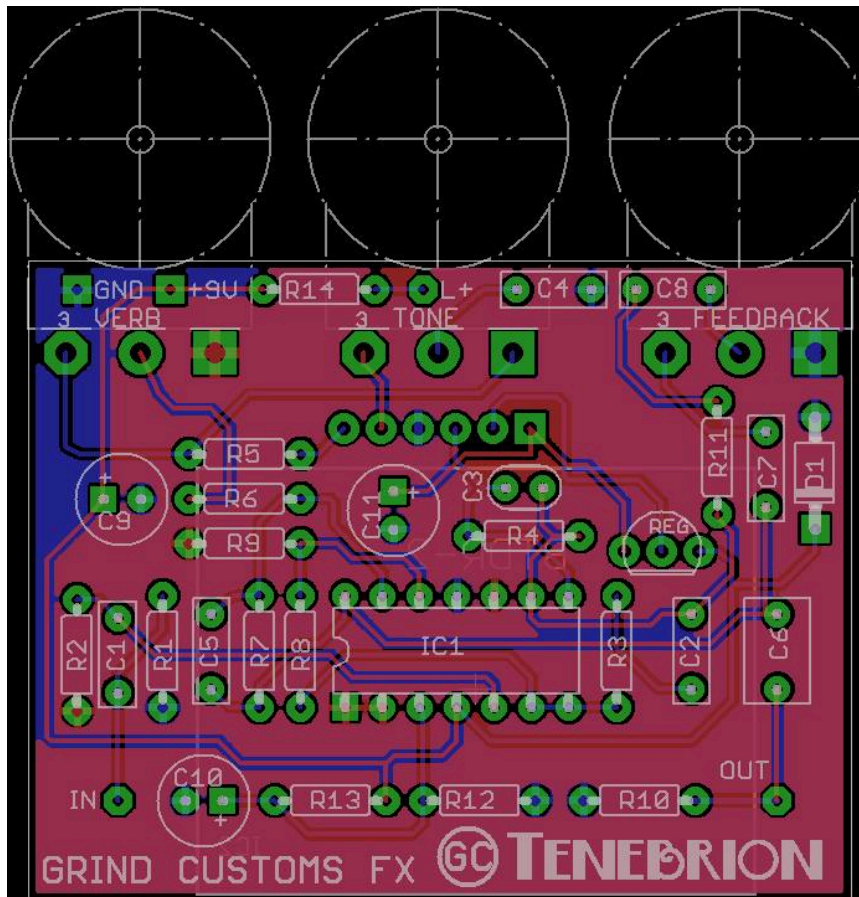


GRIND CUSTOMS FX

WWW.GRINDCUSTOMSFX.COM

TENEBRION



R1	1M	C1	100N	D1	1N4001
R2	1M	C2	22N	TONE	B10K
R3	10K	C3	470P	REVERB	B25K
R4	22K	C4	47N	FEEDBACK	B250K
R5	10K	C5	4N7	BRICK	BTDR-2
R6	10K	C6	1U	REG	78L05
R7	10K	C7	100N	IC1	TL074
R8	10K	C8	100N		
R9	33K	C9	100U		
R10	33K	C10	100U		
R11	22K	C11	100U		
R12	10K				
R13	10K				
R14	10K				

GRIND CUSTOMS FX

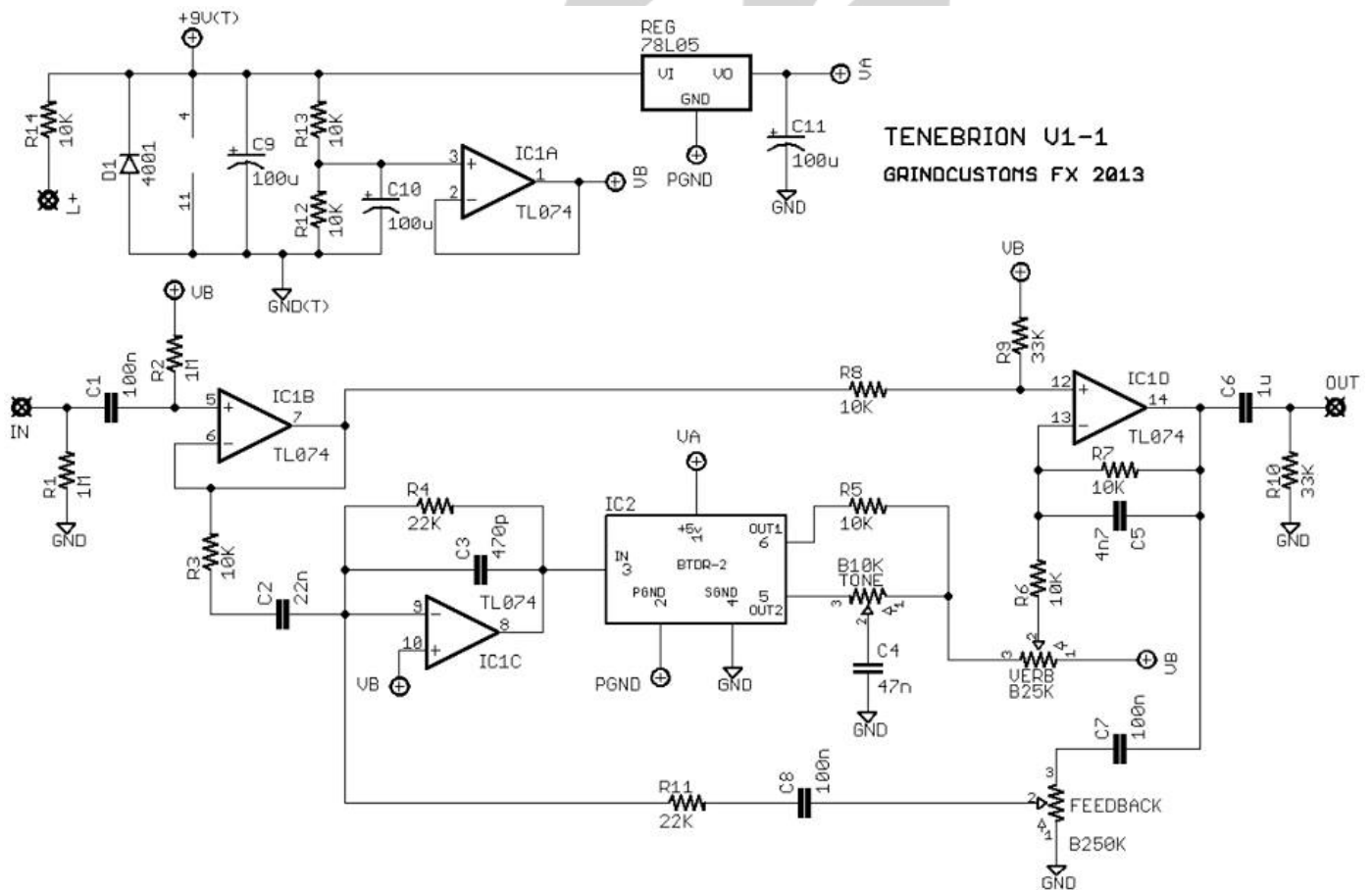
WWW.GRINDCUSTOMSFX.COM

GROUP HUG

This is an early collaboration between Rej and Forrest. Forrest designed the Hall of Fame to which Rej then added the feedback path and tweaked some things here and there to balance the effect. The Tenebrion is their love child.

HISTORY

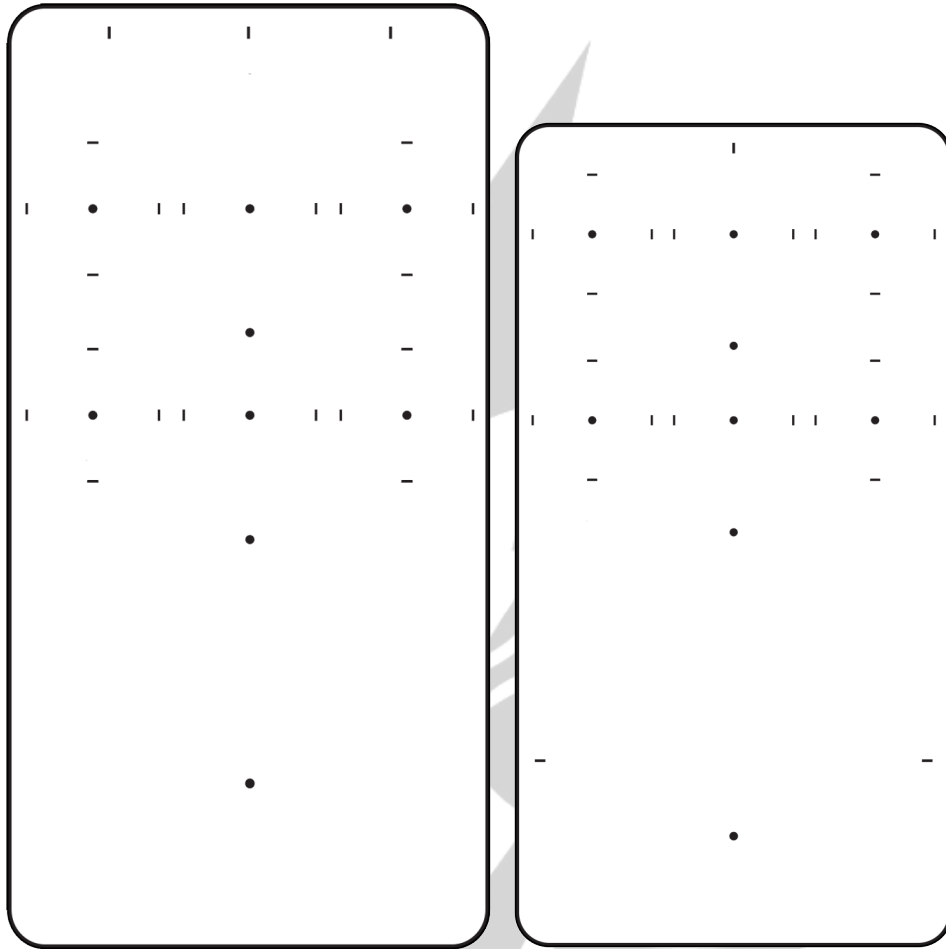
Just build this one as is. I think the consensus among the Grinders (-o) is that the medium brick sounds best with this. You get just the right amount of modulation coming through that's really quite pleasant.



GRIND CUSTOMS FX

WWW.GRINDCUSTOMSFX.COM

STANDARD 125B / 1590B DRILLING TEMPLATES



The PCB was designed to work either in a 1590B or 125B enclosure. There are extra ground pads and 9V pads to give alternate ways of wiring it up, they don't need to be all connected. Also, if a bypass daughter board with LED is used, you can omit the on-board current limiting resistor (CLR).