

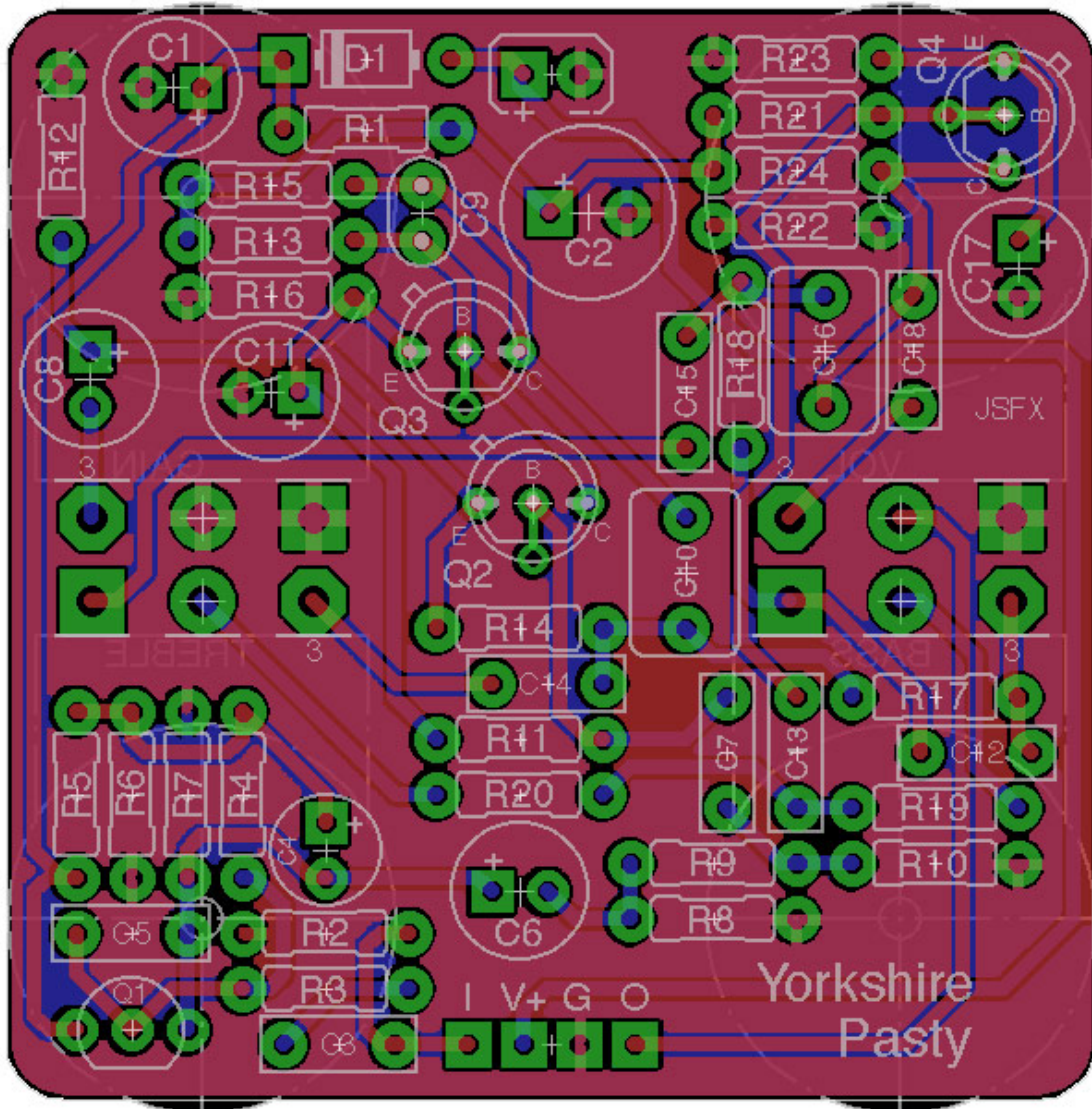
JUANSOLOFX

STOMPAGE.JUANSOLO.CO.UK

JSFX?

JSFX isn't actually a thing. It's just something to call me and Cleggy who are making effects for ourselves along with the PCB layout ninjitsu of Jason (Jubal81-ApetoneFX). Some of those PCBs might make it out into the wild so I thought I'd do some docs for them.

YORKSHIRE PASTY



OVERVIEW

We like the Colorsound Overdriver quite a lot. It's a massively versatile OD that can do everything from clean boost all the way to ball shaking doom. But it's not without it's problems, and that comes down to it behaving like an old fuzz. So if you want have a wah on there with it, forget it, it'll just stop working. We decided to fix that with a really rather nice buffer strapped to the front of the effect.

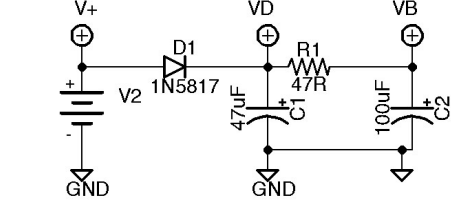
The good news being that it really doesn't alter the character of the effect much at all. Indeed, you'd have to back-to-back one to be able to tell the difference.

JUANSOLOFX

STOMPAGE.JUANSOLO.CO.UK

BOM

R1	47R	C1	47U	D1	1N5817
R2	10M	C2	100U		
R3	1K	C3	100N	Q1	BC549C
R4	120K	C4	4U7	Q2-4	BC109
R5	120K	C5	1N		
R6	200K	C6	150N	GAIN	C5K
R7	7K5	C7	220N	BASS	B100K
R8	20K	C8	22U	TREBLE	B100K
R9	22K	C9	220P	VOLUME	A100K
R10	51K	C10	1U		
R11	150K	C11	22U		
R12	6K8	C12	100N		
R13	120K	C13	100N		
R14	12K	C14	10N		
R15	1K8	C15	10N		
R16	470R	C16	1U		
R17	4K7	C17	22U		
R18	4K7	C18	220N		
R19	39K				
R20	5K6				
R21	150K				
R22	33K				
R23	470R				
R24	1K8				



Yorkshire Pasty JSFX v1

